



WITTENSTEIN cyber motor integrates servo drive solutions in SERVOfsoft®

WITTENSTEIN cyber motor goes SERVOfsoft®: technical data for the company's standard servo drive solutions is now available in the powerful SERVOfsoft® sizing tool. With SERVOfsoft®, users in the plant and mechanical engineering sector can design, size and simulate complete multi-axis servo systems – including all their electrical and mechanical components – for tasks such as design, application, simulation and planning.

By choosing SERVOfsoft®, WITTENSTEIN cyber motor has opted for another powerful engineering tool that enables the fast, efficient and reliable modeling of multi-axis servo systems. In just a few clicks, users tasked with designing drive solutions can calculate and simulate systems that enable optimum interaction between the servo motor, gearbox, load profile, servo drive and mechanical structure. SERVOfsoft® therefore speeds up the engineering process – and faster development also means faster to market.

Integration of the standard portfolio at an advanced stage

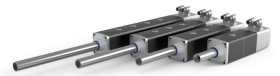
Large parts of WITTENSTEIN cyber motor's standard range are already available in SERVOfsoft®. These include brushless servo motors from the cyber® dynamic line, electromechanical linear actuators from the cyber® force line including cyber® force MG actuators with hollow shaft and integrated recirculating ball screw, frameless servo motors from the cyber® kit line product family, and the wheel actuator of the cyber® TAS actuator 2 system for Automated Guided Vehicles (AGV) and Autonomous Mobile Robots (AMR). The integration of further standard products – including rotary actuators, servo drives and compact drive systems – is advancing rapidly.

Link to the CADENAS product catalog

When they use SERVOfsoft®, design engineers also get a link to the digital PARTcommunity product catalog from CADENAS. This gives them easy, direct and instant access to the complete up-to-date range of 2D and 3D CAD models, CAE models and 3D PDF data

September 25, 2025

WITTENSTEIN SE develops products, systems and solutions for highly dynamic motion, maximum-precise positioning and smart networking for mechatronic and cybertronic drive technology.



The new cyber® force line series of electromechanical linear actuators is available in various configurations in SERVOfsoft®.

WITTENSTEIN SE

Walter-Wittenstein-Str. 1
97999 Igersheim · Germany

Contact: Sabine Maier
Trade Press Officer | Deputy Press Officer
Phone +49 7931 493-10399
Email sabine.maier@wittenstein.de
www.wittenstein.de

sheets, which they can then put to use in sizing and selecting products for their engineering project.

By integrating its products in SERVOfsoft®, WITTENSTEIN cyber motor is once again demonstrating its ability to combine innovative drive technologies with practical engineering tools – for more efficiency, precision and speed in plant and mechanical engineering.

For further product information, please visit WITTENSTEIN cyber motor's website at <https://cyber-motor.wittenstein.de/de-de/produkte/>

Learn more about the partner solution SERVOfsoft®: [ControlEng: SERVOfsoft - Size Complete Servo Systems](#)

Pictures:



logo-servosoft.png

Technical data for drive manufacturer WITTENSTEIN cyber motor's standard servo drives is now available in the SERVOfsoft® sizing tool.



wittenstein-cyber-force-line-family.jpg

The new cyber® force line series of electromechanical linear actuators is available in various configurations in SERVOfsoft®. These compact drives are the ideal solution for applications requiring high precision, force and speed.
(Photo: WITTENSTEIN SE)

WITTENSTEIN SE

Walter-Wittenstein-Str. 1
97999 Iggersheim · Germany

Contact: Sabine Maier
Trade Press Officer | Deputy Press Officer
Phone +49 7931 493-10399
Email sabine.maier@wittenstein.de
www.wittenstein.de



wittenstein-cyber-kit-line-family.jpg

Frameless servo motors from the cyber[®] kit line product family are now also available in various sizes in SERVOfsoft[®]. These motors deliver maximum torque and flexibility in a compact design. (Photo: WITTENSTEIN SE)

Texts and photographs in printable quality can be downloaded from <https://www.wittenstein.de/en-en/company/press/>

WITTENSTEIN – one with the future

With around 2900 employees worldwide and sales of €526 million in 2024/25, WITTENSTEIN SE enjoys an impeccable reputation for innovation, precision and excellence in the field of cybertronic motion – not just in Germany but internationally. The group possesses exceptional expertise for the mastery and further development of all technologies relevant to mechatronic drives and comprises six innovative Strategic Business Divisions. We develop, produce and sell products such as high-precision servo drives and linear systems, servo systems and motors as well as cybertronic drive systems for many areas of application including machine and plant construction, aerospace or oil and gas exploration. Nanotechnology and software components round off the portfolio. With 25 sites in more than 45 countries, the WITTENSTEIN group (www.wittenstein.de) is represented in all major technology and sales markets.

WITTENSTEIN SE

Walter-Wittenstein-Str. 1
97999 Igersheim · Germany

Contact: Sabine Maier
Trade Press Officer | Deputy Press Officer
Phone +49 7931 493-10399
Email sabine.maier@wittenstein.de
www.wittenstein.de